



CRAVEN • THOMPSON & ASSOCIATES, INC.

ENGINEERS • PLANNERS • SURVEYORS

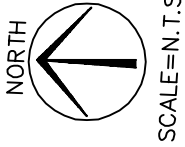
3563 N.W. 53RD STREET FORT LAUDERDALE, FLORIDA 33309 (954) 739-6400

FAX: (954) 739-6409

FOR: **DANIA BEACH, BROWARD COUNTY, FLORIDA**

NOTE: THIS IS NOT A SKETCH OF SURVEY, but only a graphic depiction of the description shown hereon. There has been no field work, viewing of the subject property, or monuments set in connection with the preparation of the information shown hereon.

SKETCH AND DESCRIPTION OF LIFT STATION EASEMENT (EXHIBIT "B")

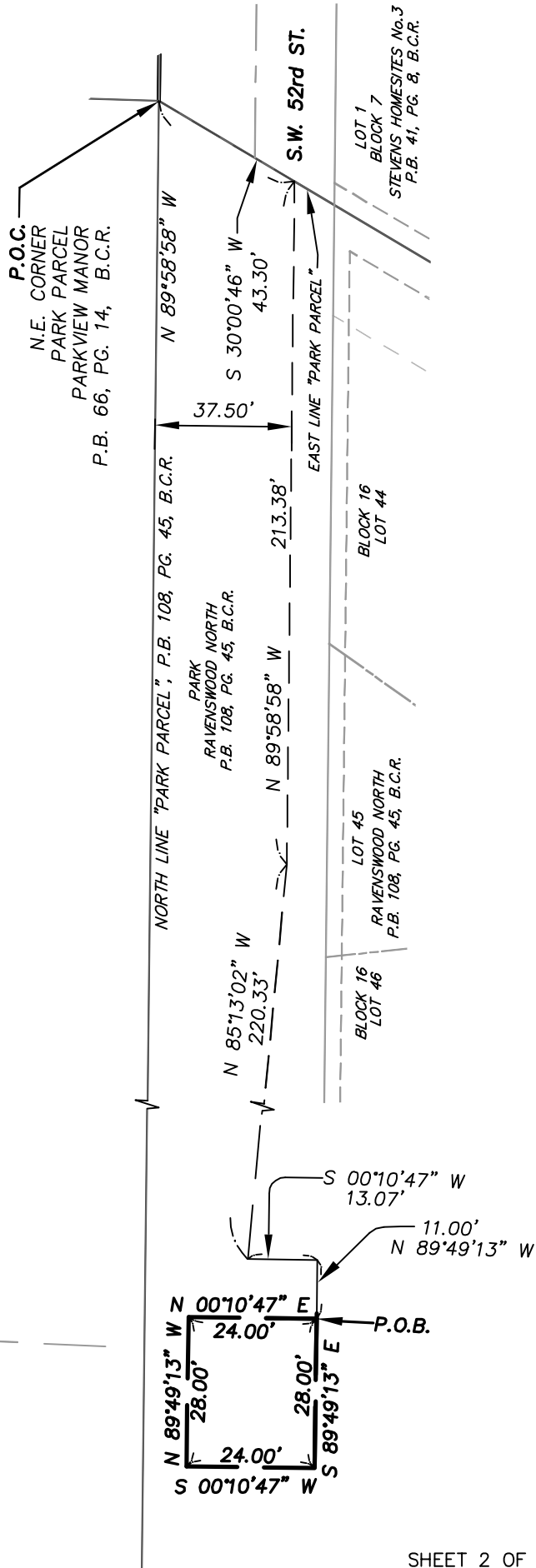


LEGEND:

- B.C.R. = BROWARD COUNTY RECORDS
- D.C.R. = DADE COUNTY RECORDS
- L.S. = LIFT STATION
- N.T.S. = NOT TO SCALE
- P.B. = PLAT BOOK
- PG. = PAGE
- P.O.B. = POINT OF BEGINNING
- P.O.C. = POINT OF COMMENCEMENT

SURVEYOR'S NOTES:

1. THIS IS NOT A SURVEY.
2. BEARINGS SHOWN HEREON ARE BASED ON PLAT BEARINGS AS REFERENCED ON SHEET 2.
3. UNLESS THIS SKETCH AND DESCRIPTION BEARS THE SIGNATURE AND RAISED SEAL OF A FLORIDA LICENSED SURVEYOR AND MAPPER, THIS MAP IS FOR INFORMATIONAL PURPOSES ONLY AND IS NOT VALID. ADDITIONS AND DELETIONS MADE TO THE FACE OF THIS SKETCH AND DESCRIPTION WILL MAKE THIS SKETCH AND DESCRIPTION INVALID.



SHEET 2 OF 2 SHEETS

| UPDATES and/or REVISIONS | DATE | BY | CK'D |
|--------------------------|---------|-----|------|
| DESCRIPTION | 4-26-13 | MRM | RDP |
| ADDED_EXHIBIT "B" | 6-3-13 | MRM | MRM |
| | | | |
| | | | |
| | | | |

NOTE The undersigned and CRAVEN-THOMPSON & ASSOCIATES, INC. make no representations or guarantees as to the information reflected hereon pertaining to easements, rights-of-way, set back lines, reservations, agreements and other similar matters, and further, this instrument is not intended to reflect or set forth all such matters. Such information should be obtained and confirmed by others through appropriate title verification.

NOTE Lands shown hereon were not abstracted for right-of-way and/or easements of record.

G: \2005\05-0143-308_ASBUILTS\DWG\UAZ-308_S-D.DWG

| | | | | | |
|----------------------|---------------|-----------------|---------|--------|-----------------|
| JOB NO.: 05-0143-308 | DRAWN BY: MRM | CHECKED BY: RDP | F.B. NA | PG. NA | DATED: 04/26/13 |
|----------------------|---------------|-----------------|---------|--------|-----------------|